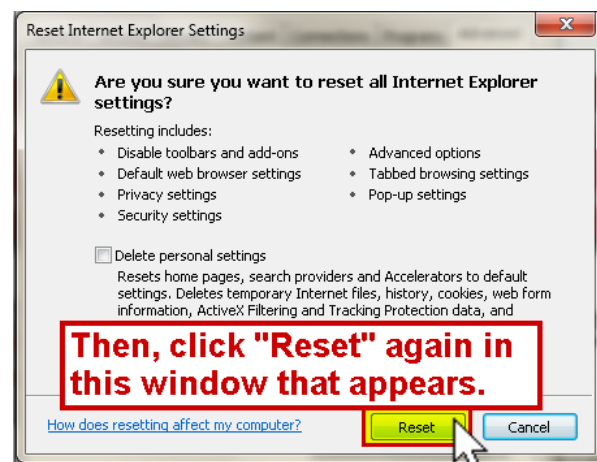
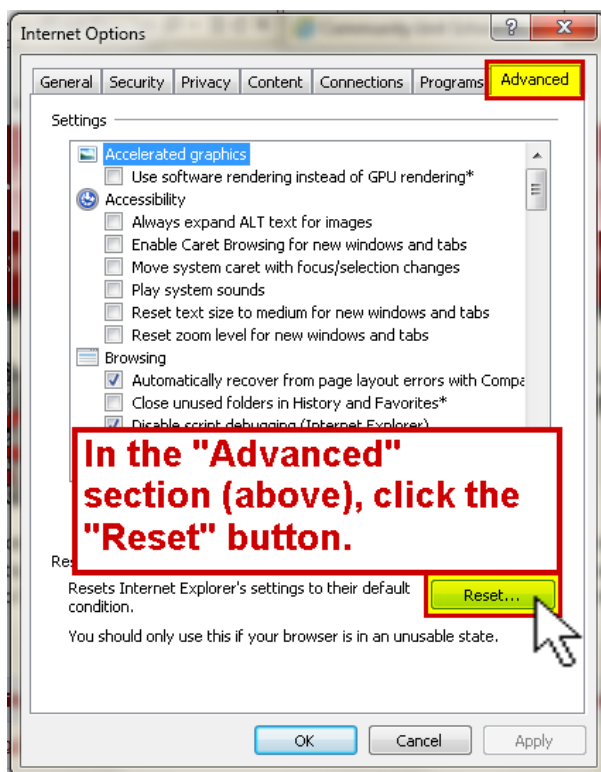
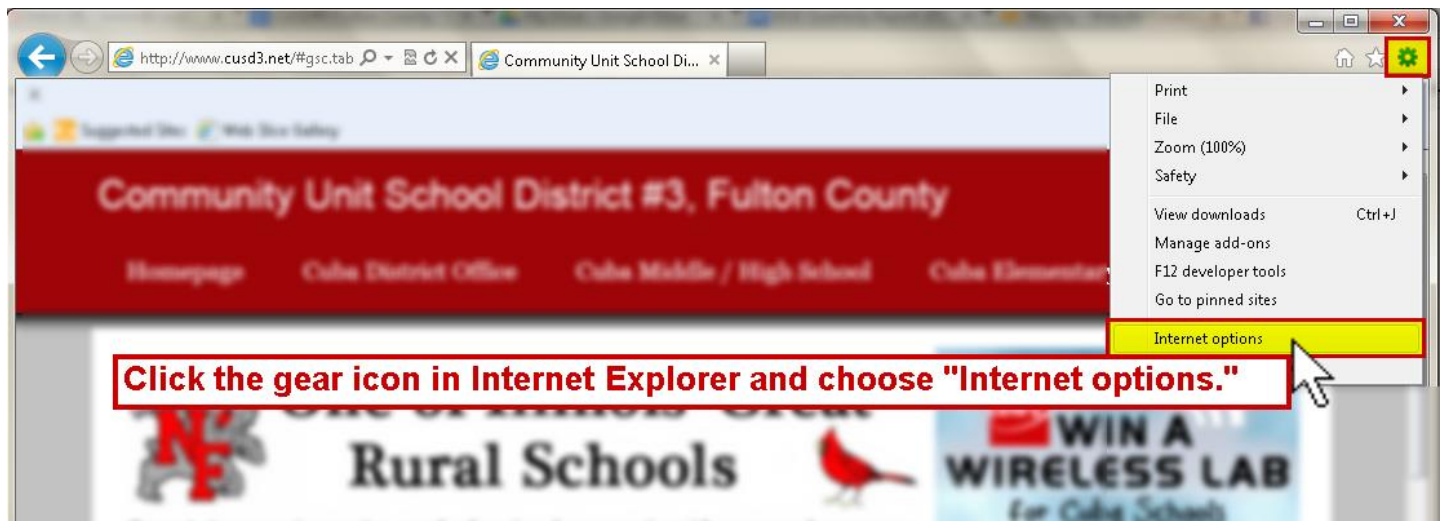


Occasionally problems in Internet Explorer can be solved simply by restoring the default settings of the program. This is especially true on lab computers or student-use computers where students may change settings unknowingly. This process is harmless and can always be tried as a first step of troubleshooting when IT help is not immediately available.

### Resetting Internet Explorer Default Settings



Lastly, close and re-open Internet Explorer to see if the changes you made helped resolve the issue.